

## Creative Partnerships Team

### Catherine Orbach

### Director

Catherine Orbach has been Director since the team formed in late 2004. Originally trained in Fine Art Catherine has worked for many years in gallery education, working with Tate Liverpool and Tate Modern before moving to the south coast to work at the De La Warr Pavilion. Catherine is a keen advocate of partnership working and has worked to ensure the Creative Partnerships programme connects with relevant education and creative and cultural partners in this area.

As **Director**, Catherine provides the vision and energy that draws together key partners and initiates strategic partnerships that ensure a legacy of creative learning in the area and is currently working to expand the programme to cover the whole of Surrey and Sussex.



### Cindy Cox

### Programme & Development Manager (part time)

Cindy has a degree in Dance and Culture from University of Surrey, Guildford, specialising in dance management and participation. She previously worked for the education team at The Place in London and South East Dance National Dance Agency in Brighton where she spent four years managing Education and Community and Professional Development programmes across the region.

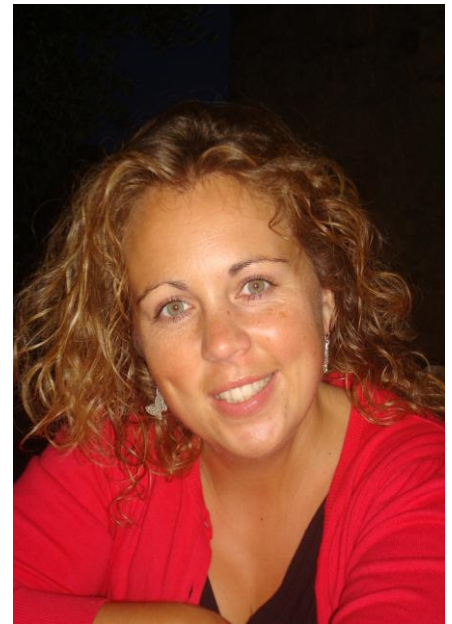
Cindy joined Creative Partnerships as Programmer in April 2005. Until October 2007 she oversaw core schools activity in East Sussex and led on areas of Strategic Programming. Following 'breaks' to have her two children, Cindy returned to lead on new strands in West Sussex and Surrey, and is now **Programme and Development Manager**, focusing on these areas.



## **Sarah Atkins**

Sarah has a degree in Media and Information studies from Brighton University. Before, during and after this she worked for a number of music companies and organisations including Sony music, Virgin records, Trust the DJ, Mixmag and EMI. After a year of travelling Sarah joined The Brighton Institute of Modern Music from when they first opened their doors and worked on everything from the curriculum to events to marketing. After 3 years at BIMM Sarah joined West Sussex County Council as Youth Arts Officer, followed by 2 years as Event Manager for BBC Blast and subsequent freelance work with BBC raw and Brighton Festival. Sarah joined Creative Partnerships as **Programmer** in June 2009 and leads on Enquiry Schools activity in West Sussex and Surrey.

**Programmer:**  
**Enquiry Schools** (*part time*)



## **Beth Martin**

Following a degree in English at Durham University, Beth worked for the BBC, primarily as a Producer and project-manager. Her roles ranged from producing Arts programmes for the Open University to English Language Teaching (ELT) programmes for the World Service (encompassing women's development, literature and business) to producing a web-based ELT resource for refugees and asylum seekers. In 2005 she shifted career to work more in arts development and coordinated the Teacher Artist Partnership programme, a groundbreaking CPD initiative for teachers and artists to explore the potential of partnership working. She joined Creative Partnerships in September 2007 as **Programmer** on a part time basis with lead responsibility for programme development in East Sussex and Brighton and Hove Enquiry Schools.

**Programmer:**  
**Enquiry Schools** (*part time*)



## Jess Moore

After training in Stage Management & Technical Theatre at LAMDA, Jess spent several years working on a range of productions across the country and in London's West End. She has since developed a career in arts administration through work with Bill Kenwright Limited, Coin Street Community Festivals, The Mayor's Thames Festival and the audio description provider Vocaleyes. As **Operations Manager**, Jess is responsible for all procurement aspects of the programme, communications and maintaining a smoothly run office.

## Operations Manager



## Kristina Sekyere

Before arriving at Creative Partnerships, Kristina completed her Music degree at the University of Reading and then spent a further three years working for the University developing their concerts and musical activities programme. Kristina continues to play the cello and is the Orchestra Manager for Eastbourne Symphony Orchestra, which she manages to do in her spare time. Within her role as **Programme Coordinator** Kristina supports and coordinates the development of the programme in all regions.

## Programme Coordinator



## **Peter Thompson**

Following a BA in African and Asian Studies in 1977, Peter qualified as a teacher and since that time has had various roles in secondary schools in East Sussex including running a Special Needs Dept, a Music Dept, Head of Year and House and setting up an Inclusion Unit. He has an MSc in Information Systems and a Post Graduate Diploma in Counseling and Groupwork. He has been a full-time youth worker and in 1999 he was seconded as an Advisory Teacher to the 'Schoolnet 2000' project (brainchild of Stephen Heppell's Ultralab at East Anglia University). Peter joined the Creative Partnerships team as a Creative Agent in 2005 and took up his present post in 2006. As **Associate Adviser**, Peter supports the Continuing Professional Development (CPD) and managing the Change Schools programme in East Sussex. Peter is a trombonist playing with Brighton based ska/jazz/funk band 'Skatoons' and other ensembles in the area.

## **Associate Adviser, ESSIS & Creative Partnerships**

